

APPENDIX VI - ORIGINAL WORKING DRAWINGS OF SLIDING RAILWAY BRIDGE

OFFICE.
Farness Railway.

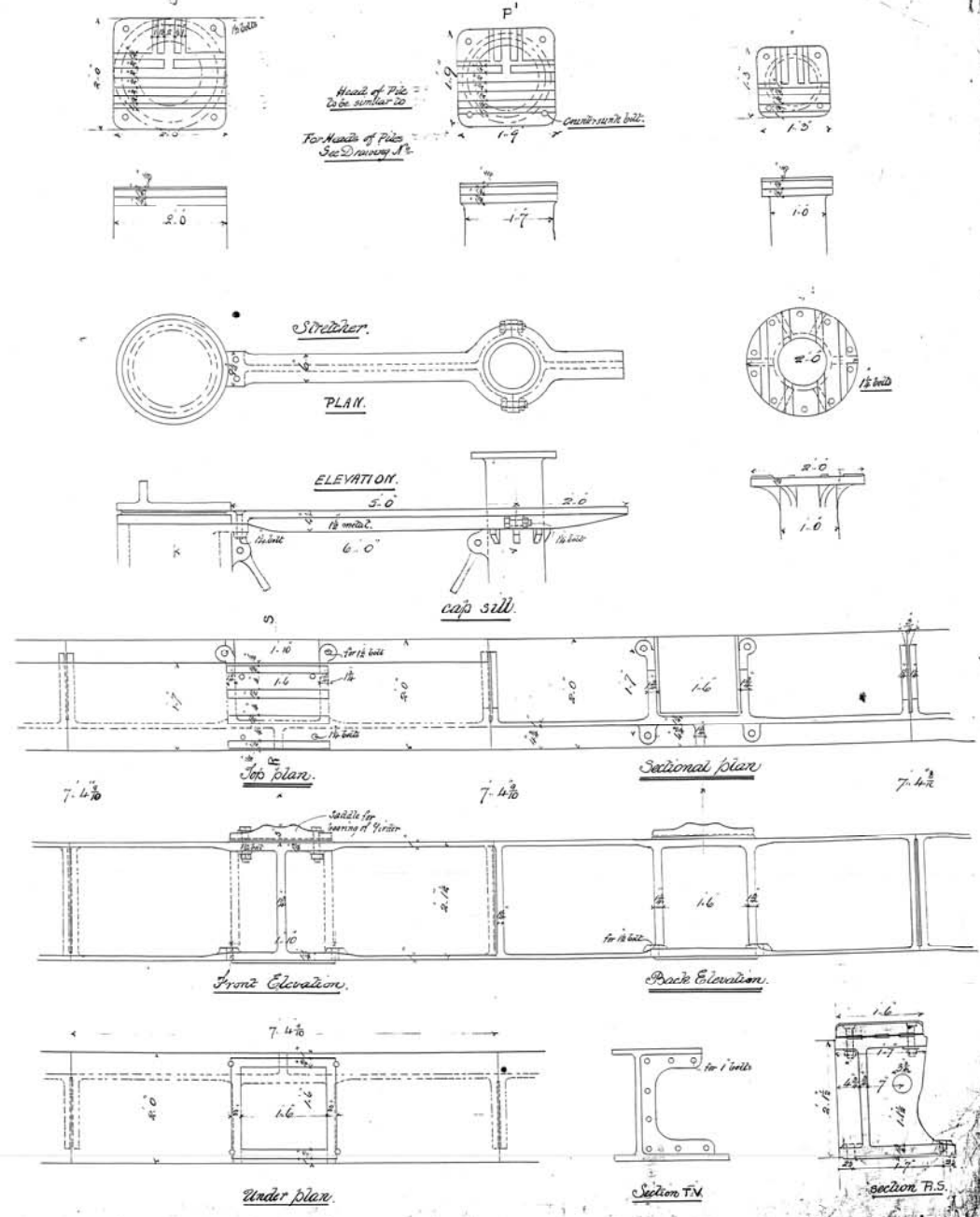
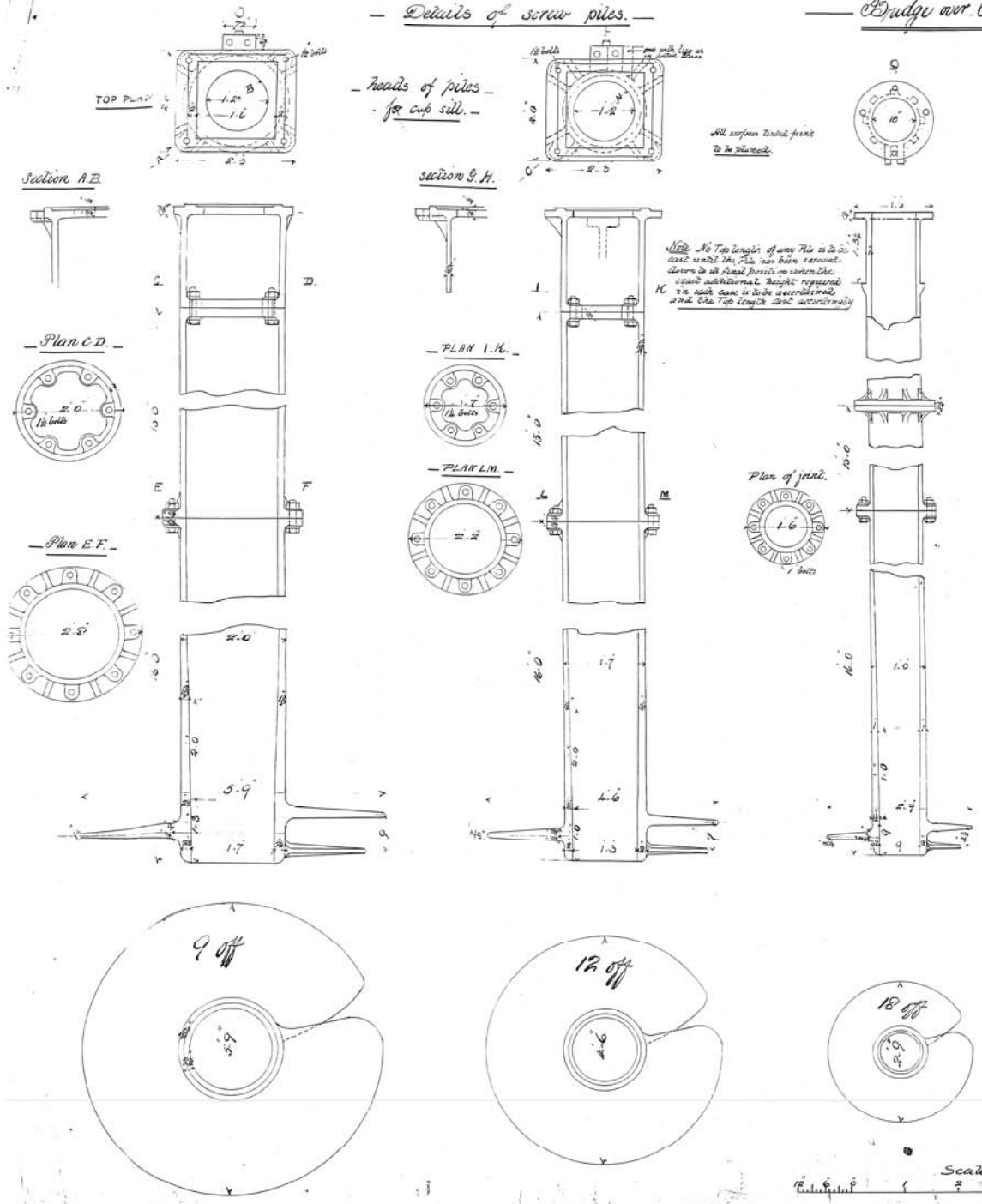
Barrow Branch.
Bridge over canal.

Contract Drawing.

Sheet N^o 2.

Details of screw piles.

Heads of piles with rail plates for girder.



Note: No Top length of any Pile is to be used until the Pile has been examined down to its Head & found to contain the equal & uniform weight required. If in any case it is found to be unequal, and the Top length does accordingly.

All surfaces should first be planed.

Head of Pile to be similar to

For Heads of Pile See Drawing N^o 1.

Strainer.

PLAN.

ELEVATION.

cap sill.

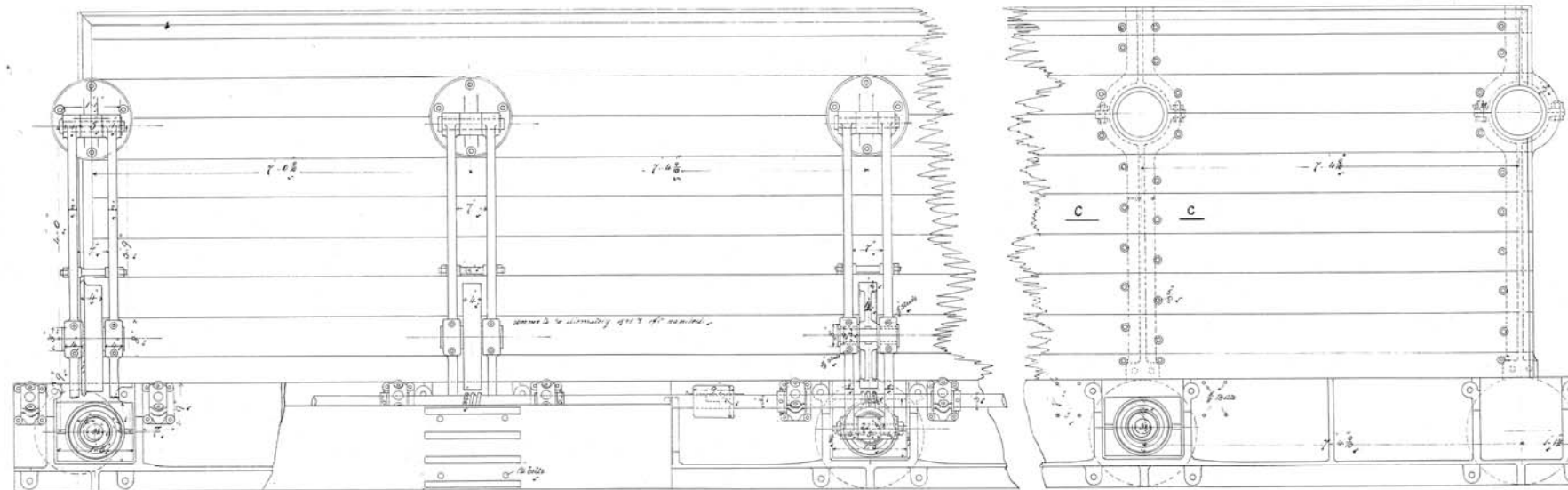
OFFICE
Furness Railway

Bardsca Branch.
Bridge over Canal.

Contract Drawing N^o 5
Sheet N^o 7.

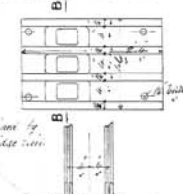
1880. 1877
All dimensions in feet and inches unless otherwise stated.
See other drawings

PLAN OF ROLLERS & LIFTING GEAR AT CENTRE
OF BRIDGE.



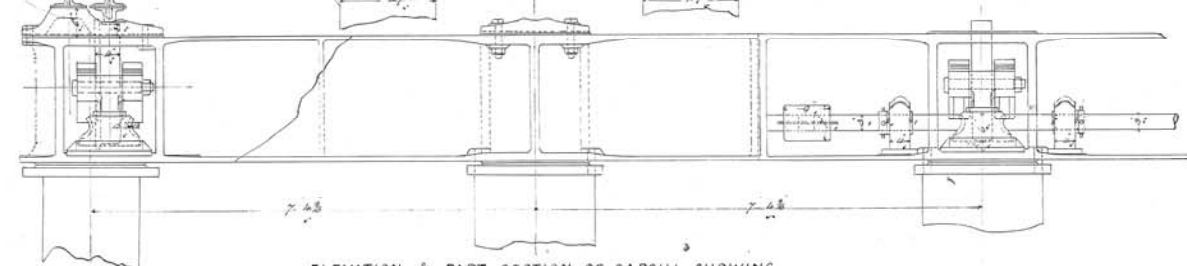
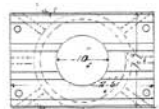
SECTION C.C.

UNDER PLAN OF SPECIAL SADDLE.



The dimensions to be maintained by
making the depth of the saddle
conform to the 1 1/2"

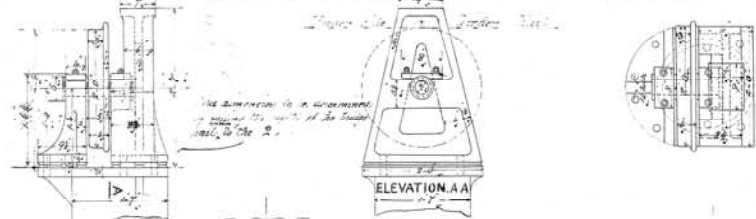
PLAN OF PILE HEAD P^o



ELEVATION & PART SECTION OF CAPSILL SHOWING
LIFTING GEAR.

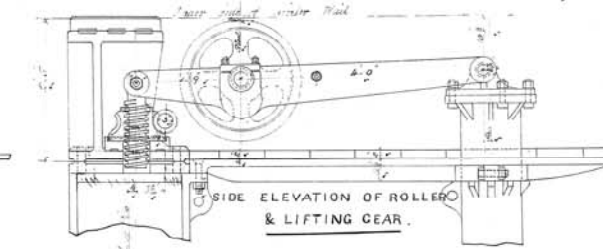
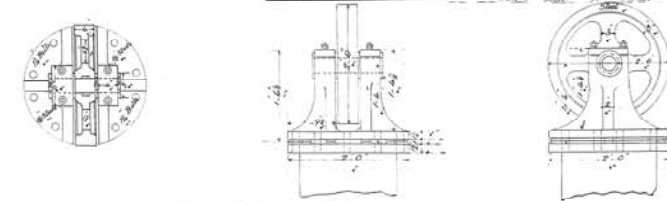
SECTION B.B.

STATIONARY BEARING & ROLLER AT P^o DRAWING N^o 5, SHEET N^o 1.



ELEVATION A.A.

STATIONARY BEARINGS & ROLLERS
AT REAR OF BRIDGE.



SIDE ELEVATION OF ROLLERS
& LIFTING GEAR.

SHAFT BEARING
ELEVATION

PLAN OF TOP OF PILES P^o & Q^o
FOR STATIONARY ROLLERS

Scale
1 inch = 1 foot

